



Penn Medicine

Continuing Medical and
Interprofessional Education

PENN GI POST DDW 2018 REVIEW CONFERENCE



A CME/CNE-ACCREDITED CONFERENCE

Saturday, June 16, 2018

**Hilton Philadelphia City Avenue
4200 City Avenue
Philadelphia, PA 19131
215-879-4000**

www.penncmeonline.com





Program Overview & Target Audience

The field of clinical gastroenterology continues to experience an enormous and seemingly ever increasing array of options and advancements affecting many elements of managing GI disorders. These advancements apply to both diagnostic and treatment options, including pharmacological agents and enhancements to technology options for diagnosis and interventions. The busy gastroenterology clinician must remain on top of these advancements, must be knowledgeable about every diagnostic and treatment option that is available for managing each of their patients, as well as learn, understand and effectively utilize these available technology advancements.

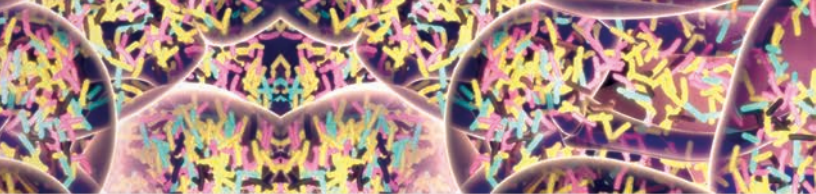
The Digestive Disease Week (DDW) is the premier annual national and international conference where new research findings and evidence from leading expert practices are announced. Our goal is to provide direct access of the latest evidence from those findings to busy physicians and their practices in the community by creating a forum for expert review of updates and discussion about the research and how practitioners can use it to benefit their patients. The CME/CNE educational program primary objective is to improve the knowledge and competence of clinicians and other health care professionals involved in GI patient care in all areas of GI treatments and management options, with an emphasis on those identified conditions where prevalence is increasing and patient management proves to be a known challenge.

This course is designed for physicians, nurse practitioners, physician assistants, healthcare professionals, residents, fellows and students with an interest in gastroenterology.

Learning Objectives:

Upon successful completion of this activity, participants should be able to:

- Describe recent developments in gastroenterology and hepatology
- Discuss controversial and novel findings as presented at Digestive Diseases Week
- Increase knowledge of advances in the basic sciences and translate these findings into patients care -related bedside management
- Review recent advances in hepatology, focusing on major advances in the preceding 12 months. Focused areas include: Viral Hepatitis and Hepatic Malignancies
- Provide an overview of recent advances in gastroenterology, focusing on major advances in the preceding 12 months. Focused areas include: Inflammatory Bowel Disease, GI Neuroendocrine Tumors, Esophageal Diseases, Colorectal Neoplasia, Luminal GI Malignancies, the Microbiome, Therapeutic Endoscopy, Women's Issues in GI, Lower GI Motility Disorders and Functional Bowel Syndrome



Hosting Department

Penn GI Post DDW 2018 Review Conference is hosted by the Department of Medicine, Division of Gastroenterology at Penn Medicine.

Disclosures

Penn Medicine, Office of Continuing Medical and Interprofessional Education, adheres to the ACCME *Standards for Commercial Support*. Faculty and planners disclosure information will be made available in the conference materials and syllabi. Faculty members are also expected to disclose to participants any discussions of off-label and/or investigational uses of pharmaceutical products within their presentations.

Accreditation



JOINTLY ACCREDITED PROVIDER™
INTERPROFESSIONAL CONTINUING EDUCATION

In support of improving patient care, Penn Medicine is jointly accredited by the Accreditation Council for Continuing Medical Education (ACCME), the Accreditation Council for Pharmacy Education (ACPE), and the American Nurses Credentialing Center (ANCC), to provide continuing education for the healthcare team.

Designation of Credit

Physicians: Penn Medicine designates this live activity for a maximum of 6.25 *AMA PRA Category 1 Credits™*. Physicians should claim only the credit commensurate with the extent of their participation in the activity.



ABIM MOC: Successful completion of this CME activity, which includes participation in the evaluation component, enables the participant to earn up to 6.25 MOC points in the American Board of Internal Medicine's (ABIM) Maintenance of Certification (MOC) program. Participants will earn MOC points equivalent to the amount of CME credits claimed for the activity. It is the CME activity provider's responsibility to submit participant completion information to ACCME for the purpose of granting ABIM MOC credit.

Nurses: This activity is approved for 6.25 contact hours.

Certificates and Transcripts: After the conference has concluded, all participants will receive a follow-up email with instructions and a link. Once participants submit the request for credit, the earned credits will be available for viewing on a transcript and certificates will be available for printing at www.penncmeonline.com. Please note that the individual certificate will not be mailed.

Registration Fees

The registration fees for the *Penn GI Post DDW 2018 Review Conference* are \$35 for practicing physicians and industry representatives and complimentary for nurse practitioners, physician assistants, healthcare professionals, fellows, residents and students.



The registration fee includes attendance to the conference, conference materials and the link to view the presentations (slides) online, continental breakfast and lunch.

You may register online for the course by visiting www.penncmeonline.com then clicking on CME/CNE activities/live events and scrolling down to this conference on the list. You may also mail your completed registration form. We cannot accept faxed registration forms.

Please see the top of the registration form for mailing information. All registrations will be confirmed in writing if your registration form and fee are received by June 1, 2018.

Cancellation and Refund Policy

In order to process refunds for course withdrawals, cancellations must be received in writing by June 1, 2018 (subject to a service charge of \$15.00). No refunds will be issued thereafter.

The University reserves the right to cancel or postpone any course due to unforeseen circumstances. In the event of cancellation or postponement, the University will refund registration fees, but is not responsible for related costs or expenses to participants, including cancellation fees assessed by hotels, airlines, and travel agencies.

Conference Location

Penn GI Post DDW 2018 Review Conference will be held Friday, June 16, 2018 at the Hilton Philadelphia City Avenue, 4200 City Avenue, Philadelphia, PA 19131.

Parking: The Hilton Philadelphia City Avenue offers valet-parking for \$10 per car and self-parking in their parking lot for \$8 per car. Parking fees are the responsibility of the attendee. Parking fees are not validated or reimbursed by the conference.

Nondiscrimination Statement The University of Pennsylvania values diversity and seeks talented students, faculty, and staff from diverse backgrounds. The University of Pennsylvania does not discriminate on the basis of race, sex, sexual orientation, gender identity, religion, color, national or ethnic origin, age, disability, or status as a Vietnam Era Veteran or disabled veteran in the administration of educational policies, programs or activities; admissions policies; scholarship and loan awards; athletic, or other University administered programs or employment. Questions or complaints regarding this policy should be directed to Executive Director, Office of Affirmative Action and Equal Opportunity Programs, 3600 Chestnut Street, Sansom Place East Suite 228, Philadelphia PA 19104-6106 or 215-898-6993 (Voice) or 215-898-7803 (TDD). www.upenn.edu/affirm-action

Services for the Disabled If special arrangements are required for an individual with a disability to attend this meeting, please contact the Office of Continuing Medical Education no later than June 1, 2018 at 215-898-8005.

The Course Directors & Faculty hold academic and/or clinical appointments from the Perelman School of Medicine at the University of Pennsylvania and Penn Medicine, Philadelphia, PA

CONFERENCE DIRECTORS

Gary R. Lichtenstein, MD
Professor of Medicine
Director, Center for
Inflammatory Bowel Disease

Anil K. Rustgi, MD
T. Grier Miller
Professor of Medicine
Chief, Division of Gastroenterology

CONFERENCE CO-DIRECTORS

Anna Buchner, MD, PhD
Assistant Professor of Medicine
Division of Gastroenterology

Laurel Fisher, MD
Professor of Clinical Medicine
Division of Gastroenterology

FACULTY

Nitin Ahuja, MD, MS
Assistant Professor of
Clinical Medicine
Division of Gastroenterology

Michael Rajala, MD, PhD
Assistant Professor of
Clinical Medicine
Division of Gastroenterology

Jesse A. Green, MD
Chief of Gastroenterology
Penn Presbyterian Medical Center
Professor of Clinical Medicine

Farzana Rashid, MD
Assistant Professor of
Clinical Medicine
Division of Gastroenterology

Gregory G. Ginsberg, MD
Professor of Medicine
Executive Director of Endoscopy

James C. Reynolds, MD, AGAF, FACP, FACG
Professor of Clinical Medicine
Division of Gastroenterology

Shivan J. Mehta, MD, MBA, MSHP
Assistant Professor of Medicine
Director of Operations
Penn Medicine Center
for Innovation

Kenneth Rothstein, MD
Professor of Clinical Medicine
Division of Gastroenterology

David C. Metz, MD
Professor of Medicine
Associate Chief for Clinical Affairs
Division of Gastroenterology

Monica Saumoy, MD
Division of Gastroenterology

Frederick A. Nunes, MD
Clinical Professor of Medicine
Division of Gastroenterology

Vesselin Tomov, MD, PhD
Instructor of Medicine
Division of Gastroenterology



AGENDA

Saturday, June 16, 2018

- 7:15 – 8:00 AM** Registration and Continental Breakfast
- 8:00 – 8:10 AM** Introduction and Welcome
Anil Rustgi, MD
- 8:10 – 8:40 AM** Neuroendocrine Tumors
David Metz, MD
- 8:40 – 9:10 AM** Esophageal Disorders
Nitin Ahuja, MD, MS
- 9:10 – 9:40 AM** Therapeutic Endoscopy & Novel Technology
Greg Ginsberg, MD
- 9:40 – 10:10 AM** The Microbiome
Vesselin Tomov, MD, PhD
- 10:10 – 10:40 AM** Colorectal Neoplasia and Cancer
Shivan Mehta, MD, MBA, MSHP
- 10:40 – 11:00 AM** Break/Refreshments
- 11:00 – 11:30 AM** Pancreatic Disease
Michael Rajala, MD
- 11:30 AM – 12:00 PM** Inflammatory Bowel Disease
Gary Lichtenstein, MD
- 12:00 – 12:30 PM** Viral Hepatitis, NASH
Fred Nunes, MD
- 12:30 – 12:45 PM** Pick-up Lunch
- 12:45 – 1:15 PM** Panel Discussion
Laurel Fisher, MD
- 1:15 – 1:45 PM** Nutrition & Obesity
Monica Saumoy, MD
- 1:45 – 2:15 PM** Dysplasia in IBD
Jesse Green, MD
- 2:15 – 2:45 PM** Lower Bowel Motility and Functional Bowel Disorders
James Reynolds, MD, AGAF, FACP, FACC
- 2:45 – 3:00 PM** Conclusion
Gary Lichtenstein, MD

PENN GI POST DDW 2018 REVIEW CONFERENCE

Saturday, June 16, 2018

If you are registering using your credit card, please register online at:
www.penncmeonline.com and click on CME/CNE Activities/Live Events.

Questions? Contact us at:

Phone: 215-898-6400 or 215-898-8005 • penncme@mail.med.upenn.edu

Please note we are unable to accept faxed registration forms.

Please print or type

Name (First)

(Last)

Academic Degree

Medical Specialty

Affiliation (Hospital, Office, or Company)

Address (Affiliation or Home)

City

State

Zip

Phone

Fax

E-mail

Registration Fee (pre-payment is required to be officially registered)

- \$35.00 for Practicing Physicians and Industry Representatives
- Complimentary for Nurse Practitioners, Physician Assistants, Healthcare Professionals, Fellows, Residents and Students

Payment Method

- If you are paying by credit card, please register online at www.penncmeonline.com and click on CME/CNE Activities/Live Events.
- If you are paying by check, you may mail your completed registration form and check made payable to **The Trustees of the University of Pennsylvania/CME** to:
Conference Coordinator, Penn Medicine, Office of Continuing Medical and Interprofessional Education, 150 Anatomy/Chemistry Building
3620 Hamilton Walk, Philadelphia, PA 19104-6061
- Do not include any credit card information on the registration form or email any credit card information

Please Note: Walk-in registrants must bring payment to the program.
Seating may be limited for walk-in registrants..



150 Anatomy/Chemistry Building
3620 Hamilton Walk
Philadelphia, PA 19104-6061



PENN GI POST DDW 2018 REVIEW CONFERENCE



Saturday, June 16, 2018

Hilton Philadelphia City Avenue
4200 City Avenue
Philadelphia, PA 19131
215-879-4000

Non-Profit Org.
U.S. Postage
PAID
Permit No. 2563
Phila., PA 19104