



Penn Medicine

Continuing Medical and
Interprofessional Education

PENN NEURO- OPHTHALMOLOGY 2018 UPDATE

A CME-ACCREDITED CONFERENCE

Saturday, October 13, 2018

**Law Auditorium
Jordan Medical Education Center
University of Pennsylvania
3400 Civic Center Blvd
Philadelphia, PA**

www.penncmeonline.com



Program Overview & Target Audience

Neuro-ophthalmology bridges the fields of ophthalmology and neurology through the diagnosis and management of patients with neurological disorders that affect vision and eye movements. Over the past decade, there have been several advances in the field, including those in diagnostic imaging and treatments studied in clinical trials. This course will review basic neuro-ophthalmic principles and in addition update the audience on recent developments in neuro-ophthalmology.

The Neuro-Ophthalmology Division at the University of Pennsylvania, consisting of six full-time faculty members, has a rich history and active clinical, educational, and research components. The program is part of Penn's Department of Neurology, Penn's Department of Ophthalmology/The Scheie Eye Institute, and the Division of Ophthalmology at the Children's Hospital of Philadelphia.

This conference is intended for practicing neurologists, ophthalmologists, residents, fellows and healthcare professionals interested in neuro-ophthalmology.

Learning Objectives

Upon successful completion of this activity, participants should be able to:

- Describe appropriate treatment approaches to diplopia, eye pain, eyelid disorders, and the neuro-ophthalmology of neuro-degenerative disorders
- Differentiate optic neuropathy from glaucoma; and papilledema from pseudopapilledema
- Discuss what is new in pseudotumor cerebri syndrome, orbital inflammatory syndromes, and thyroid eye disease
- Describe pediatric eye movement disorders
- Review current clinical trials in neuro-ophthalmology
- Describe neuro-ophthalmic emergencies

Hosting Department

Penn Neuro-ophthalmology 2018 Update is hosted by the Departments of Neurology and Ophthalmology at the Perelman School of Medicine at the University of Pennsylvania, and the Division of Ophthalmology at the Children's Hospital of Philadelphia.



Disclosures

Penn Medicine, Office of Continuing Medical and Interprofessional Education, adheres to the ACCME *Standards for Commercial Support*. Faculty and planners' disclosure information will be made available in the conference materials and syllabi. Faculty members are also expected to disclose to participants any discussions of off-label and/or investigational uses of pharmaceutical products within their presentations.

Accreditation



JOINTLY ACCREDITED PROVIDER™
INTERPROFESSIONAL CONTINUING EDUCATION

In support of improving patient care, Penn Medicine is jointly accredited by the Accreditation Council for Continuing Medical Education (ACCME), the Accreditation Council for Pharmacy Education (ACPE), and the American Nurses Credentialing Center (ANCC), to provide continuing education for the healthcare team.

Designation of Credit

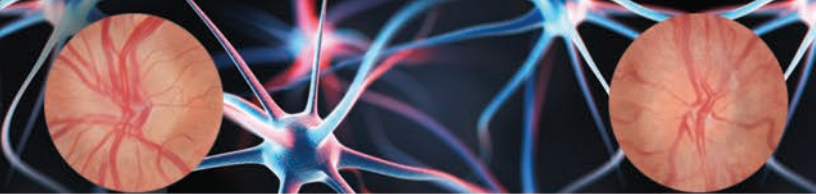
Physicians: Penn Medicine designates this live activity for a maximum of 6.25 *AMA PRA Category 1 Credits™*. Physicians should claim only the credit commensurate with the extent of their participation in the activity.

Physician Assistants: AAPA accepts certificates of participation for educational activities certified for *AMA PRA Category 1 Credit™* from organizations accredited by ACCME or a recognized state medical society. PAs may receive a maximum of 6.25 Category 1 credits for completing this activity.

Certificates and Transcripts: After the conference has concluded, all participants will receive a follow-up email with instructions and a link. Once participants submit the request for credit, the earned credits will be available for viewing on a transcript and certificates will be available for printing at www.penncmeonline.com. Please note that the individual certificate will not be mailed.

Registration Fees

The registration fees for *Penn Neuro-ophthalmology 2018 Update* are \$95 for physicians, industry employees and all other healthcare professionals. There is no registration fee for Penn Medicine or Children's Hospital of Philadelphia faculty, fellows, residents, students, nurses, or ophthalmic technicians. Registration is \$25 for all other Penn Medicine or Children's Hospital of Philadelphia employees. A valid Penn Medicine or CHOP ID is required to receive the special rate.



The registration fee includes attendance to the conference, a program and a link to view the slide presentations online, credit certificate, continental breakfast, mid-morning break and lunch.

If you are registering with a credit card, please register online at www.penncmeonline.com, then click on CME/CNE activities/Live Events. We cannot accept faxed or mailed registration forms with credit card information. To pay by check, complete the registration form and mail it in with your check. Please see the registration form for mailing information. Please note: mailed registrations can take up to 5-10 business days before they are received. All registrations will be confirmed by email.

Cancellation and Refund Policy

In order to process refunds for course withdrawals, cancellations must be received in writing by October 1, 2018 (subject to a service charge of \$15.00). No refunds will be issued thereafter.

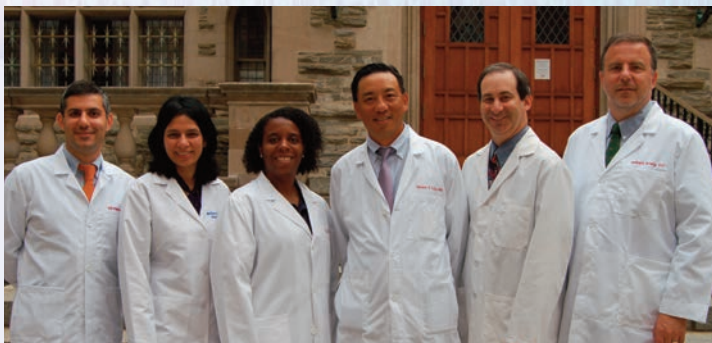
The University reserves the right to cancel or postpone any course due to unforeseen circumstances. In the event of cancellation or postponement, the University will refund registration fees, but is not responsible for related costs or expenses to participants, including cancellation fees assessed by hotels, airlines, and travel agencies.

Conference Location

The *Penn Neuro-ophthalmology 2018 Update* will be held Saturday, October 13, 2018 in the Law Auditorium at the Jordan Medical Education Center (located on the 5th floor of the Smilow Center for Translational Research and Perelman Center for Advanced Medicine), 3400 Civic Center Boulevard, Philadelphia, Pennsylvania, 19104.

Directions: We strongly recommend you use GPS or an online driving directions site (such as googlemaps.com) for directions to and from your starting point. If you prefer to take public transportation to and from campus, please visit <http://www.upenn.edu/services/transportation> for options. The University City station is the stop closest to the Jordan Medical Education Center.

Parking: On Saturday, October 13th the Perelman Center for Advanced Medicine/Smilow Center garage (3400 Civic Center Blvd) is open for attendee parking. Parking in this garage is about \$20 per day & will not be covered by the conference.



Drs. Hamedani, Tamhankar, Ross, Liu, Shindler, and Avery.

The following hold academic and/or clinical appointments from the Perelman School of Medicine at the University of Pennsylvania and Penn Medicine, Philadelphia, PA

CONFERENCE DIRECTOR

Grant T. Liu, MD

*Professor of Neurology and Ophthalmology
Raymond G. Perelman Endowed Chair in
Pediatric Neuro-Ophthalmology
Chief, Division of Neuro-ophthalmology*

FACULTY

Robert A. Avery, DO, MSCE

Assistant Professor of Ophthalmology and Neurology

Ali Hamedani, MD, MHS

Instructor in Neurology

Ahmara G. Ross, MD, PhD

Assistant Professor of Ophthalmology and Neurology

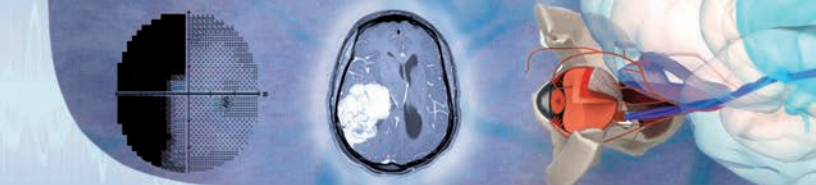
Kenneth S. Shindler, MD, PhD

Associate Professor of Ophthalmology and Neurology

Madhura A. Tamhankar, MD

Associate Professor of Ophthalmology and Neurology

Nondiscrimination Statement The University of Pennsylvania values diversity and seeks talented students, faculty, and staff from diverse backgrounds. The University of Pennsylvania does not discriminate on the basis of race, sex, sexual orientation, gender identity, religion, color, national or ethnic origin, age, disability, or status as a Vietnam Era Veteran or disabled veteran in the administration of educational policies, programs or activities; admissions policies; scholarship and loan awards; athletic, or other University administered programs or employment. Questions or complaints regarding this policy should be directed to Executive Director, Office of Affirmative Action and Equal Opportunity Programs, 3600 Chestnut Street, Sansom Place East Suite 228, Philadelphia PA 19104-6106 or 215-898-6993 (Voice) or 215-898-7803 (TDD). www.upenn.edu/affirm-action



AGENDA

Saturday, October 13, 2018

- 7:15 – 7:50 AM** Registration and Breakfast
- 7:50 – 8:00 AM** Welcome
Grant Liu, MD
- 8:00 – 8:30 AM** Is it Optic Neuropathy or Glaucoma?
Ahmara Ross, MD, PhD
- 8:30 – 9:00 AM** Papilledema or Pseudopapilledema?
Advances in Diagnostic Testing
Robert Avery, DO, MSCE
- 9:00 – 9:30 AM** Eyelid Disorders
Ali Hamedani, MD
- 9:30 – 10:00 AM** Diplopia – When Should You Worry?
Madhura Tamhankar, MD
- 10:00 – 10:15 AM** Break
- 10:15 – 10:45 AM** Orbital Inflammatory Syndromes
Kenneth Shindler, MD, PhD
- 10:45 – 11:15 AM** Neurodegenerative Diseases
Ali Hamedani, MD
- 11:15 – 11:45 AM** Eye Pain: An Approach
Ahmara Ross, MD, PhD
- 11:45 AM – 12:15 PM** Neuro-ophthalmic Emergencies
You Do Not Want to Miss!
Grant Liu, MD
- 12:15 – 1:00 PM** Lunch
- 1:00 – 1:30 PM** Pediatric Eye Movement Disorders
Robert Avery, DO, MSCE
- 1:30 – 2:00 PM** Thyroid Eye Disease – What Can You Do?
Madhura Tamhankar, MD
- 2:00 – 2:30 PM** Pseudotumor Cerebri Syndrome – What's New?
Grant Liu, MD
- 2:30 – 3:00 PM** Clinical Trials in Neuro-ophthalmology
Kenneth Shindler, MD, PhD
- 3:00 PM** Adjourn

PENN NEURO- OPHTHALMOLOGY 2018 UPDATE

Saturday, October 13, 2018

If you are registering using your credit card, please register online at:
www.penncmeonline.com and click on CME/CNE Activities/Live Events.

Questions? Contact us at:

Phone: 215-898-6400 or 215-898-8005 • penncme@mail.med.upenn.edu

Please note we are unable to accept faxed registration forms.

Please print or type

Name (First)

(Last)

Academic Degree

Medical Specialty

Affiliation (Hospital, Office, or Company)

Address (Affiliation or Home)

City

State

Zip

Phone

Fax

E-mail

Registration Fee (pre-payment is required to be officially registered)

- \$95.00 for Practicing Physicians, Industry Employees and all other Healthcare Professionals
- Complimentary for Penn Medicine or Children's Hospital of Philadelphia Faculty, Fellows, Residents, Students, Nurses, or Ophthalmic Technicians
- \$25.00 for all other Penn Medicine or Children's Hospital of Philadelphia Employees
- Penn Medicine or CHOP ID # _____

Payment Method

- If you are paying by credit card, please register online at www.penncmeonline.com and click on CME/CNE Activities/Live Events.
- If you are paying by check, you may mail your completed registration form and check made payable to **The Trustees of the University of Pennsylvania/CME** to:
Conference Coordinator, Penn Medicine, Office of Continuing Medical and Interprofessional Education, 150 Anatomy/Chemistry Building
3620 Hamilton Walk, Philadelphia, PA 19104-6061
- Do not include any credit card information on the registration form or email any credit card information

Please Note: Walk-in registrants must bring payment to the program.
Seating may be limited for walk-in registrants..



150 Anatomy/Chemistry Building
3620 Hamilton Walk
Philadelphia, PA 19104-6061

Non-Profit Org.
U.S. Postage
PAID
Permit No. 2563
Phila., PA 19104



PENN NEURO-OPHTHALMOLOGY 2018 UPDATE

A CME-ACCREDITED CONFERENCE

Saturday, October 13, 2018

Law Auditorium
Jordan Medical Education Center
University of Pennsylvania
3400 Civic Center Blvd
Philadelphia, PA