



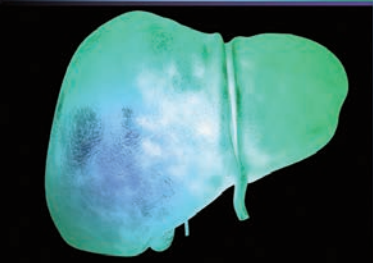
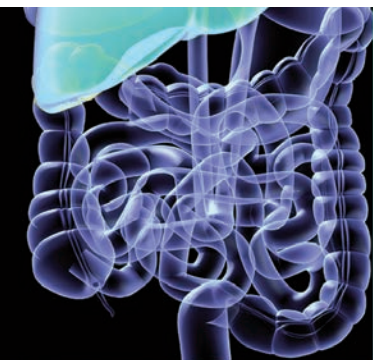
Penn Medicine

Continuing Medical and Interprofessional Education

The Division of Gastroenterology
at Penn Medicine
Presents

11th Annual

PENN LIVE:
GI ENDOSCOPY AND
LIVER DISEASE 2018



A CME/CNE-CERTIFIED CONFERENCE

Friday–Saturday
April 20-21, 2018

Smilow Center for
Translational Research
Perelman School of Medicine
University of Pennsylvania
3400 Civic Center Boulevard
Philadelphia, PA 19104

This conference is endorsed
by the American Society for
Gastrointestinal Endoscopy





PROGRAM OVERVIEW & TARGET AUDIENCE

This conference is designed to demonstrate the application and execution of therapeutic gastrointestinal endoscopy. Using a format of lectures and live cases, our faculty will address challenges and practical solutions in the endoscopic management of digestive disorders including benign and malignant disorders of the esophagus, gastroduodenum, pancreas, bile ducts, and colorectum. Additional topics will include applications of endoluminal resection, radiofrequency ablation, argon plasma coagulation, ERCP, endoscopic ultrasound, polypectomy, and endoprosthetic therapies. The program will also focus on the current research and recommendations for managing patients with acute and chronic liver disease, including viral and autoimmune hepatitis, metabolic liver disease, portal hypertensive bleeding, refractory ascites, hepatic encephalopathy, liver transplantation and post liver transplant considerations.

This conference is designed for Gastroenterologists, Hepatologists, GI Surgeons, GI Radiologists, Gastroenterology Fellows, GI Nurses, Nurse Practitioners, Physician Assistants, Medical Residents and Medical Students.

Learning Objectives

Upon completion of this activity, participants should be able to:

- Describe indications and contraindications for therapeutic endoscopy procedures
- Identify cognitive and technical challenges as well as practical solutions in the endoscopic management of digestive and related disorders including benign and malignant disorders of the esophagus, gastroduodenum, pancreas, bile ducts, and colorectum
- Review and assess updates in digestive disease management
- Discuss updates and practical approaches to managing patients with acute and chronic liver disease, including viral and autoimmune hepatitis, metabolic liver disease, portal hypertensive bleeding, refractory ascites, hepatic encephalopathy, liver transplantation and post liver transplant considerations

Hosting Department

The *11th Annual Penn Live: GI Endoscopy and Liver Disease 2018* is hosted by the Division of Gastroenterology at Penn Medicine.



Accreditation and Credit Designation



JOINTLY ACCREDITED PROVIDER™
INTERPROFESSIONAL CONTINUING EDUCATION

In support of improving patient care, Penn Medicine is jointly accredited by the Accreditation Council for Continuing Medical Education (ACCME), the Accreditation Council for Pharmacy Education (ACPE), and the American Nurses Credentialing Center (ANCC),

to provide continuing education for the healthcare team.

Designation of Credit

Physicians: Penn Medicine designates this live activity for a maximum of 14.5 *AMA PRA Category 1 Credits*™. Physicians should claim only the credit commensurate with the extent of their participation in the activity.

Nurses: This activity is approved for 14.5 contact hours.

Physician Assistants: AAPA accepts certificates of participation for educational activities certified for *AMA PRA Category 1 Credit*™ from organizations accredited by ACCME or a recognized state medical society. PAs may receive a maximum of 14.5 Category 1 credits for completing this activity.

Certificates and Transcripts: After the conference has concluded, all participants will receive a follow-up email with instructions and a link. Once participants submit the request for credit, the earned credits will be available for viewing on a transcript and certificates will be available for printing at www.penncmehonline.com. Please note that the individual certificate will not be mailed.

Disclosures

Penn Medicine, Office of Continuing Medical and Interprofessional Education, adheres to the *ACCME Standards for Commercial Support*. Faculty disclosure information will be made available in the conference materials and syllabi. Faculty members are also expected to disclose to participants any discussions of off-label and/or investigational uses of pharmaceutical products or devices within their presentations.

Registration Fees

The registration fees for the *11th Annual Penn Live: GI Endoscopy and Liver Disease 2018* are the following: \$175 for physicians and industry representatives; \$75 for nurses and healthcare professionals, residents and fellows. The registration fee for Penn Medicine employees, faculty and staff is \$39 as long as registrant has a valid Penn Medicine ID (required).

The registration fee includes attendance to the conference, a course booklet and the link to view the presentations online, continental breakfast, mid-morning break, lunch and an afternoon break on both days.

If you are registering with a credit card, please register online at www.penncmehonline.com, and then click on CME/CNE Activities then Live Events. We cannot accept faxed or mailed registration forms with credit card information. To pay by check, complete the registration form and mail it in with your check. Please see the registration form for mailing information. Please note: mailed registrations can take up to 5-10 business days before they are received. All registrations will be confirmed by email as long as your registration is received no later than April 6, 2018.



Cancellation and Refund Policy

In order to process refunds for course withdrawals, cancellations must be received in writing by April 6, 2018 (subject to a service charge equivalent to 10% of the registration fee, but no less than \$15.00). No refunds will be issued thereafter.

The University reserves the right to cancel or postpone any course due to unforeseen circumstances. In the event of cancellation or postponement, the University will refund registration fees, but is not responsible for related costs or expenses to participants, including cancellation fees assessed by hotels, airlines, and travel agencies.

Meeting Location

The *11th Annual Penn Live: GI Endoscopy and Liver Disease 2018* will be held Friday-Saturday, April 20-21, 2018 at the Smilow Center for Translational Research, Perelman School of Medicine at the University of Pennsylvania, 3400 Civic Center Boulevard, Philadelphia, Pennsylvania, 19104.

Directions & Parking: The Arthur H. Rubenstein Auditorium is located on the 1st Floor level of the Smilow Translational Research Center. Smilow TRC is connected to the Perelman Center for Advanced Medicine and is located at 3400 Civic Center Blvd, Philadelphia, PA. We strongly recommend you use GPS or use an online driving directions site (such as mapquest.com, drivingdirections.com or googlemaps.com) for exact directions to and from your starting point or if you prefer, to take public transportation to and from campus, please visit <http://www.upenn.edu/services/transportation> for options.

On Friday, April 20th, the 3600 Civic Center Blvd Parking Garage is open for public parking. This garage is accessible from Civic Center Blvd and is located at Civic Center Blvd and West Service Drive (next to the Colket Research Center). Smilow TRC is about a 5 minute walk from this parking garage. Parking is \$20 per day. This garage is only open Monday-Friday. It is closed on weekends.

On Saturday, April 21th, the Perelman Center for Advanced Medicine garage (3400 Civic Center Blvd) is open to those attending Penn Live 2018. The conference will validate the parking fees on Saturday ONLY and only in the PCAM Parking Garage. Parking fees on Friday will not be validated or reimbursed.

Overnight Accommodation Options

There are no special room rates for course participants. Please contact the following hotels directly if you are interested in overnight room reservations:

Homewood Suites by Hilton
4109 Walnut Street
Philadelphia, PA, 19104
215-382-1111
www.HomewoodUnivCity.com

**Homewood Suites offers a complimentary shuttle service*

Sheraton University City Hotel
3600 Chestnut Street
Philadelphia, PA 19104
215-387-8000
www.sheraton.com/universitycity

The Inn at Penn
3600 Sansom Street, Philadelphia, PA 19104
215-222-0200
www.theinnatpenn.com



With the exception of the guest faculty, the Course Directors & Faculty hold academic and/or clinical appointments from the Perelman School of Medicine at the University of Pennsylvania and Penn Medicine, Philadelphia, PA

Course Directors

Gregory G. Ginsberg, MD
Professor of Medicine
Executive Director of Endoscopy

David E. Kaplan, MD, MSc, FACP, FAASLD
Associate Professor of Medicine
Director of Hepatology
Philadelphia VA Medical Center

K. Rajender Reddy, MD
Ruimy Family President's Distinguished Professor of Medicine
Director of Hepatology
Director, Viral Hepatitis Center
Medical Director, Liver Transplantation

Guest Faculty

David L Carr-Locke, MD
Professor of Medicine
Clinical Director, The Center for Advanced Digestive Care
Weill Cornell Medicine
New York Presbyterian Hospital
New York, New York

Jordan Feld, MD
Clinician-Scientist
Toronto Western Hospital Liver Clinic
McLaughlin-Rotman Centre for Global Health
Toronto, Canada

Kris V. Kowdley MD, FACP, FACG, AGAF, FAASLD
Director of the Liver Care Network and Organ Care Research
Swedish Medical Center
Seattle, Washington

Course Faculty

Nitin Ahuja, MD, MS

Assistant Professor of Clinical Medicine
Division of Gastroenterology

Rotonya Carr, MD

Assistant Professor of Medicine
Co-Director, Human Metabolic Tissue
Resource, Institute of Diabetes
Obesity and Metabolism
Division of Gastroenterology

Colleen Demopoulis, BSN, CAPA

Nurse Manager
Perioperative Services/Endoscopy
Hospital of the University
of Pennsylvania

Gary Falk, MD, MS

Professor of Medicine
Division of Gastroenterology
Co-Director, Esophagology and
Swallowing Center
Co-Clinical Director, Joint Penn CHOP
Center for Digestive, Liver and
Pancreatic Medicine

David Goldberg, MD, MSCE

Assistant Professor of Medicine
and Epidemiology
Senior Scholar, Center For Clinical
Epidemiology and Biostatistics (CCEB)
Medical Director of Living Donor
Liver Transplantation

Immanuel Ho, MD

Clinical Professor of Medicine
Director of Interventional Endoscopy
Pennsylvania Hospital

Maarouf Hoteit, MD

Assistant Professor of Clinical Medicine
Director of Liver Cancer Program
Program Director, Transplant
Hepatology Fellowship

David L. Jaffe, MD

Professor of Clinical Medicine
Director of Education
Division of Gastroenterology

Vandana Khungar, MD, MSc

Assistant Professor of Medicine
Director of Inpatient Hepatology

Michael L. Kochman, MD, AGAF, FASGE

Wilmott Family Professor of Medicine
Director, Advanced Endoscopic Training
Director, Endoscopy Training
Director, Center for Endoscopic
Innovation, Research, and Training

George Makar, MD, MSCE

Associate Professor of Clinical Medicine

David C. Metz, MD

Professor of Medicine
Associate Chief for Clinical Affairs
Division of Gastroenterology

Kashyap Panganmama, MD

Clinical Associate Professor of Medicine
Director of Therapeutic Endoscopy
Penn Presbyterian Medical Center

Stacey Prenner, MD

Assistant Professor of
Clinical Medicine

Michael Rajala, MD, PhD

Assistant Professor

Kenneth Rothstein, MD

Professor of Clinical Medicine

Anil K. Rustgi, MD

T. Grier Miller Professor of Medicine
Chief, Division of Gastroenterology

Marina Serper, MD, MSc

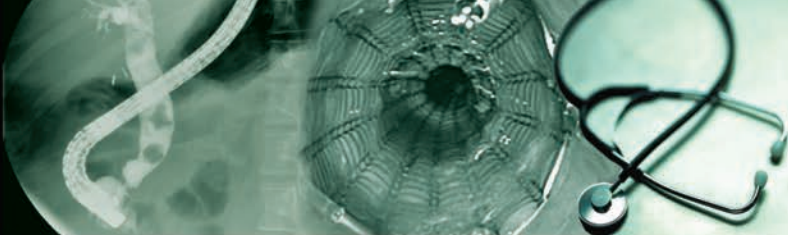
Assistant Professor of Medicine

Steven Solga, MD

Associate Professor of
Clinical Medicine

Ethan M. Weinberg, MD, MS

Instructor of Medicine
Division of Gastroenterology



Friday, April 20, 2018

7:30 AM

Registration and Continental Breakfast

8:00 AM

Welcome/Introduction

Gregory Ginsberg, MD

Anil Rustgi, MD

8:15 AM

**New Techniques in
Endoscopic Resection**

Gregory G. Ginsberg, MD

8:30 AM

Live Cases

*Moderators: David Carr-Locke, MD
and Gary Falk, MD, MS*

9:30 AM

What's New in Barrett's Ablation

Gary Falk, MD, MS

10:00 AM **Break**

10:15 AM

Indeterminate Biliary Strictures

Michael Rajala, MD, PhD

10:30 AM

Live Cases

*Moderators: David Carr-Locke, MD
and Kashyap Panganmamula, MD*

11:30 AM

Current State of Upper GI Bleeding

David L. Carr-Locke, MD

12:00 PM **Lunch**

1:00 PM

GI Luminal Carcinoids

David Metz, MD

1:15 PM

Live Cases

*Moderators: David Jaffe, MD and
David Metz, MD*

2:15 PM

Pyloric Therapies for Gastroparesis

Nitin K. Abuja, MD

2:30 PM **Break**

3:00 PM

Live Cases

*Moderators: David L. Carr-Locke, MD
and Immanuel Ho, MD*

4:15 PM

11th William "Bob" Long Lecture

43 years of ERCP:

A Personal Journey

David L. Carr-Locke, MD

5:00 PM **Adjourn**

Faculty will allow 5 minutes at the end of the presentations for Q&A

Services for the Disabled If special arrangements are required for an individual with a disability to attend this conference, please contact the Office of Continuing Medical and Interprofessional Education no later than April 6, 2018 at 215-898-8005.

Nondiscrimination Statement The University of Pennsylvania values diversity and seeks talented students, faculty, and staff from diverse backgrounds. The University of Pennsylvania does not discriminate on the basis of race, sex, sexual orientation, gender identity, religion, color, national or ethnic origin, age, disability, or status as a Vietnam Era Veteran or disabled veteran in the administration of educational policies, programs or activities; admissions policies; scholarship and loan awards; athletic, or other University administered programs or employment. Questions or complaints regarding this policy should be directed to Executive Director, Office of Affirmative Action and Equal Opportunity Programs, 3600 Chestnut Street, Sansom Place East Suite 228, Philadelphia PA 19104-6106 or 215-898-6993 (Voice) or 215-898-7803 (TDD). www.upenn.edu/affirm-action

Friday and Saturday
April 20-21, 2018

AGENDA

Saturday, April 21, 2018

Session I – Viral Hepatitis and Chronic Liver Disease

Moderator: K. Rajender Reddy, MD

7:30 AM

Registration and Continental Breakfast

8:00 AM

Hepatitis C: Is the Problem Solved? What are the Challenges?

Jordan Feld, MD

8:25 AM

Non-Alcoholic Fatty Liver Disease: Tips for the General Gastroenterologist

Kris V. Kowdley MD

8:50 AM

Hepatitis B: Is Cure Possible?

Jordan Feld, MD

9:15 AM

Panel Discussion With Cases

Moderator: K. Rajender Reddy, MD

Participants: Jordan Feld, MD,

Kris V. Kowdley, MD, Kenneth

Rothstein, MD, George Makar, MD,

MSCE, Rotonya Carr, MD

10:00 AM **Break**

10:15 AM

Hemochromatosis/Wilson Disease: How to Diagnose and How Not to Miss Them

Kris V. Kowdley, MD

Session II – Case-based Management of Common Liver Issues

Moderator: David E. Kaplan, MD, MSc

10:45 AM

Challenges With Rehospitalization of the Cirrhotic and How we Can Intervene to Decrease it

Vandana Khungar, MD, MSc

11:10 AM

A Cirrhotic Patient With Melena

Stacey Prenner, MD

11:35 AM

Cirrhotic Patients with Abnormal Ultrasound

Maarouf Hoteit, MD

12:00 PM **Lunch**

1:00 PM

A Patient With Jaundice and Itching

Steven Solga, MD

1:30 PM

The Live Donor Experience

David Goldberg, MD, MSCE

2:00 PM

A Cirrhotic Patient With a Distended Abdomen

Ethan M. Weinberg, MD, MS

2:30 PM **Break**

2:40 PM

GI/Hepatology Consult: Alcoholic Hepatitis – What Can we Offer?

Rotonya Carr, MD

3:10 PM

Challenging Cases from the Community: Cases Submitted by Attendees and Faculty

Moderator: Marina Serper, MD, MSc

Participants: Vandana Khungar, MD,

MSc, Maarouf Hoteit, MD,

Stacey Prenner, MD, Ethan M.

Weinberg, MD, MS

4:10 PM **Adjourn**

Faculty will allow 5 minutes at the end of the presentations for Q&A

11th Annual

**PENN LIVE: GI ENDOSCOPY
AND LIVER DISEASE 2018**

Registration Form

Friday and Saturday
April 20-21, 2018

If you are registering using your credit card, please register online at:
www.penncmehome.com and click on CME/CNE Activities/Live Events.

Questions? Contact us at:

Phone: 215-898-6400 or 215-898-8005 penncme@mail.med.upenn.edu

Please note we are unable to accept faxed registration forms.

Please print or type

Name (First)

(Last)

Academic Degree

Medical Specialty

Affiliation (Hospital, Office, or Company)

Address (Affiliation or Home)

City

State

Zip

Phone

Fax

E-mail

Registration Fee (pre-payment is required to be officially registered)

- \$175.00 for Practicing Physicians and Industry Representatives
- \$75.00 for Nurses, Healthcare Professionals, Residents and Fellows
- \$39.00 for Penn Medicine Employees, Faculty and Staff

Penn Medicine ID # _____

Payment Method

- If you are paying by credit card, please register online at www.penncmehome.com and click on CME/CNE Activities/Live Events.
- If you are paying by check, you may mail your completed registration form and check made payable to **The Trustees of the University of Pennsylvania/CME** to:
Conference Coordinator, Office of Continuing Medical and Interprofessional Education, 150 Anatomy/Chemistry Building, 3620 Hamilton Walk, Philadelphia, PA 19104-6061
- Do not include any credit card information on the registration form or email any credit card information

Please Note: Walk-in registrants must bring payment to the program.
Seating may be limited for walk-in registrants.

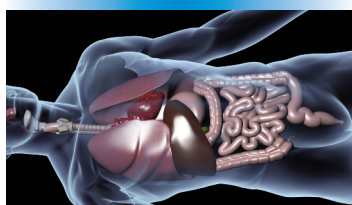


Penn Medicine

Continuing Medical and Interprofessional Education

150 Anatomy/Chemistry Building
3620 Hamilton Walk
Philadelphia, PA 19104-6061

Non-Profit Org.
U.S. Postage
PAID
Permit No. 2563
Phila., PA 19104



11th Annual

**PENN LIVE: GI ENDOSCOPY
AND LIVER DISEASE 2018**

A CME/CNE-CERTIFIED CONFERENCE

**Friday and Saturday
April 20-21, 2018**

Smilow Center for Translational Research
Perelman School of Medicine
University of Pennsylvania
3400 Civic Center Boulevard
Philadelphia, PA 19104



**This conference is endorsed by the
American Society for Gastrointestinal Endoscopy**