



Penn Medicine

**FRIDAY,  
JANUARY 26, 2018**  
7:30 AM – 4:30 PM

Hilton Philadelphia City Avenue  
4200 City Avenue  
Philadelphia, PA 19131

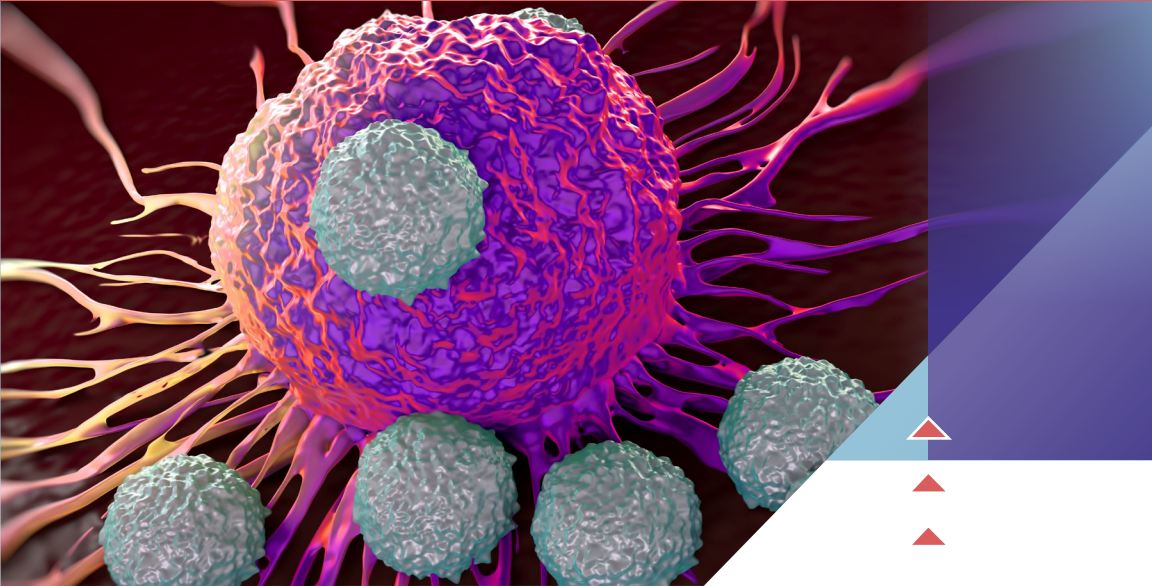
Penn Medicine's Abramson Cancer Center  
and the Leukemia & Lymphoma Society PRESENT

# 2018 UPDATE IN HEMATOLOGIC MALIGNANCIES

with Proceedings from International Medical Meetings

*A CME/CNE-certified Conference*

REGISTER ONLINE AT  
[PENNMEDICINE.ORG/ABRAMSON/BLOODCME](http://PENNMEDICINE.ORG/ABRAMSON/BLOODCME)



Penn Medicine's Abramson Cancer Center  
and the Leukemia & Lymphoma Society P R E S E N T

# 2018 UPDATE IN HEMATOLOGIC MALIGNANCIES

with Proceedings from International Medical Meetings

*A CME/CNE-certified Conference*

FRIDAY, JANUARY 26

2018

7:30 AM – 4:30 PM

HILTON PHILADELPHIA  
CITY AVENUE

4200 City Avenue  
Philadelphia, PA 19131

## DIRECTIONS AND PARKING

Visit [philadelphiacityavenue.hilton.com](http://philadelphiacityavenue.hilton.com)

Valet and self parking available.

Parking fees are not covered by this conference.

## WHO SHOULD ATTEND

This activity has been designed for hematologists, medical and radiation oncologists, primary care physicians, pathologists, hematology/oncology fellows, oncology nurses, oncology social workers, and other healthcare professionals involved in the treatment of patients with blood cancer.

Please note that most conference materials will be available online. Please bring your electronic device to view presentations in real time.

## OVERVIEW

This conference is a comprehensive review of hematologic malignancies focusing on the clinical application of new research developments over the preceding year. Didactic presentations will include case discussions with Penn faculty and community experts. The conference format will provide significant opportunity for interaction with expert faculty and other attendees. Participants will leave with up-to-date, practical information which will have immediate clinical application.

## LEARNING OBJECTIVES

Upon completion of this conference, participants should be able to:

- Discuss clinical features, including differential diagnoses for the various hematologic malignancies
- Describe recent advances in treatment for the various hematologic malignancies
- Summarize the major patient management issues experienced by the interprofessional care team associated with hematologic malignancies
- Define the state-of-the-art for genomic analyses for hematologic malignancies
- Apply new strategies for incorporating therapies that target metabolism in blood cancers

# AGENDA

**7:30 am** Registration and Continental Breakfast

**8:00 am** Welcome and Introduction

Edward A Stadtmauer, MD

Ellen Rubesin, Executive Director, Leukemia & Lymphoma Society

## KEYNOTE PRESENTATION

**8:10 am** Actualizing Cellular Therapies for Hematologic Malignancies

Edward A Stadtmauer, MD and Patricia Mangan, MSN, CRNP

## NEW THERAPIES AND CURRENT MANAGEMENT OF LYMPHOMAS

**MODERATOR:** Stephen J Schuster, MD

**9:00 am** New Therapies and Current Management of Follicular Lymphomas

Stephen J Schuster, MD

**9:30 am** Therapeutic Advances in Hodgkin's and T-Cell Lymphoma

Jakub Svoboda, MD

**10:00 am** Large Cell Lymphoma and Aggressive Lymphomas

Sunita D Nasta, MD

**10:30 am** Case Presentation with Panel Discussion

**MODERATOR:** Daniel J Landsburg, MD

**PANEL:** Community Oncologist TBA

Danielle Land, MSN, CRNP

Sunita D Nasta, MD

Jakub Svoboda, MD

Stephen J Schuster, MD

**11:15 am** BREAK

## UPDATE ON TREATMENT STRATEGIES IN LEUKEMIA

**MODERATOR:** Selina M Luger, MD

**11:25 am** Update in Treatment Strategies for ALL and AML

Shannon R McCurdy, MD

**11:55 am** Update in Myeloproliferative Disease

Daria V Babushok, MD, PHD

**12:20 am** Emerging Treatment Options for Myelodysplastic Syndromes

James K Mangan, MD, PhD

**12:40 pm Panel Discussion with Question and Answer Session**

**MODERATOR:** Selina M Luger, MD

**PANEL:** Community Oncologist TBA  
Daria V Babushok, MD, PhD  
Marie Block, MSN, CRNP  
James K Mangan, MD, PhD  
Shannon R McCurdy, MD

**1:10 pm Lunch and Network**

**JOIN A SPECIAL INTEREST LUNCH TABLE**

*Talk with an expert and network with colleagues*

**TOPICS INCLUDE:**

Cellular Therapy  
Stem Cell/Bone Marrow Transplantation  
Immuno-compromised Patient  
Toxicities  
Chronic Lymphocytic Lymphoma  
Pharmacology in the Geriatric Patient  
Late Effects for Survivors  
Economics of Cellular Therapies (Pharmacist)

**Open Networking**

*Talk with a Physician, Nurse, Pharmacist*

**2:00 pm Update in Bone Marrow and Stem Cell Transplantation**

Noelle V Frey, MD, MSCE

**CONTROVERSIES AND UPDATE IN MULTIPLE MYELOMA**

**MODERATOR:** Edward A Stadtmauer, MD

**2:30 pm Initial Therapy for Multiple Myeloma Including Transplant**

Alfred L Garfall, MD, MTR

**3:00 pm Experimental Therapies for Relapsed Myeloma**

Dan T Vogl, MD, MSCE

**3:30 pm Role of Immunotherapy for Myeloma**

Adam D Cohen, MD

**4:00 pm Case Presentation with Panel Discussion**

**MODERATOR:** Edward A Stadtmauer, MD

**PANEL:** Stephen G Wallace, MD  
Adam D Cohen, MD  
Alfred L Garfall, MD  
Patricia Mangan, MSN, CRNP  
Dan T Vogl, MD, MSCE

**4:30 pm Evaluation and Adjourn**

# SPEAKERS

## ACTIVITY DIRECTOR



### **Edward A Stadtmauer, MD**

Roseman, Tarte, Harrow, and Shaffer Families' President's Distinguished Professor

Chief, Hematologic Malignancies Section  
Division of Hematology Oncology  
Co-Leader, Hematologic Malignancies Research Program

## ACTIVITY CO-DIRECTORS



### **Selina M Luger, MD**

Professor of Medicine  
Division of Hematology Oncology  
Director, Leukemia Program



### **David L Porter, MD**

Jodi Fisher Horowitz Professor of Leukemia Care Excellence  
Division of Hematology Oncology  
Director, Blood and Marrow Transplantation



### **Stephen J Schuster, MD**

Robert and Margarita Louis-Dreyfus Associate Professor of Chronic Lymphocytic Leukemia and Lymphoma  
Division of Hematology Oncology  
Director, Lymphoma Program and Lymphoma Translational Research

## GUEST SPEAKER

### **Stephen G Wallace, MD**

Clinician, Hematology Oncology | Penn Medicine at Virtua

## PERELMAN SCHOOL OF MEDICINE FACULTY

### **Daria V Babushok, MD, PhD**

Instructor of Medicine, Division of Hematology Oncology

### **Marie Block, MSN, CRNP**

Nurse Practitioner of Medicine  
Division of Hematology Oncology

### **Adam D Cohen, MD**

Assistant Professor of Medicine  
Division of Hematology Oncology

### **Noelle V Frey, MD, MSCE**

Assistant Professor of Medicine  
Division of Hematology Oncology

### **Alfred L Garfall, MD, MTR**

Assistant Professor of Medicine  
Division of Hematology Oncology

### **Danielle Land, MSN, CRNP**

Nurse Practitioner of Medicine  
Division of Hematology Oncology

### **Daniel J Landsburg, MD**

Assistant Professor of Medicine  
Division of Hematology Oncology

### **James K Mangan, MD, PhD**

Assistant Professor of Medicine  
Division of Hematology Oncology

### **Patricia Mangan, MSN, CRNP**

Nurse Practitioner of Medicine  
Division of Hematology Oncology

### **Shannon R McCurdy, MD**

Assistant Professor of Medicine  
Division of Hematology Oncology

### **Sunita D Nasta, MD, FACP**

Assistant Professor of Medicine  
Division of Hematology Oncology

### **Jakub Svoboda, MD**

Assistant Professor of Medicine  
Division of Hematology Oncology

### **Dan T Vogl, MD**

Assistant Professor of Medicine  
Division of Hematology Oncology

# REGISTRATION

Non-Penn Physicians.....	\$50
Non-Penn residents, fellows, nurses and other healthcare professionals .....	\$25
Penn faculty, staff, residents, fellows, nurses, physician assistants and students .....	\$25

Registration fee includes course materials, continental breakfast, and lunch.

For additional information please contact  
[Barbara.Lopez@uphs.upenn.edu](mailto:Barbara.Lopez@uphs.upenn.edu)

REGISTER ONLINE AT  
[PennMedicine.org/Abramson/BloodCME](http://PennMedicine.org/Abramson/BloodCME)

## ACCREDITATION AND DESIGNATION OF CREDIT

### ACCREDITATION

In support of improving patient care, Penn Medicine is jointly accredited by the Accreditation Council for Continuing Medical Education (ACCME), the Accreditation Council for Pharmacy Education (ACPE), and the American Nurses Credentialing Center (ANCC), to provide continuing education for the healthcare team.



JOINTLY ACCREDITED PROVIDER™  
INTERPROFESSIONAL CONTINUING EDUCATION

### DESIGNATION OF CREDIT

**PHYSICIANS:** Penn Medicine designates this live activity for a maximum of *8.25 AMA PRA Category 1 Credits™*. Physicians should claim only the credit commensurate with the extent of their participation in the activity.

**NURSES:** The program will award 8.25 contact hours.

**PHYSICIAN ASSISTANTS:** AAPA accepts certificates of participation for educational activities certified for *AMA PRA Category 1 Credits™* from organizations accredited by ACCME or a recognized state medical society. PAs may receive a maximum of 8.25 Category 1 credits for completing this activity.

## DISCLOSURES

*The Perelman School of Medicine at the University of Pennsylvania, Office of Continuing Medical and Interprofessional Education, adheres to the ACCME Standards for Commercial Support. Faculty disclosure information will be made available in the conference materials and syllabus. Faculty members are also expected to disclose to participants any discussion of off-label and / or investigational use of pharmaceutical products or devices within their presentations.*

## CANCELLATION POLICY

*The University reserves the right to cancel or postpone any conference due to unforeseen circumstances. In the event of cancellation or postponement, the University will refund registration fees but is not responsible for any related costs or expenses to participants, including cancellation fees assessed by hotels, airlines and travel agencies.*

*In order to process refunds for conference withdrawals, we must receive cancellation in writing by December 15, 2017.*

## SERVICES FOR THE DISABLED

*If special arrangements are required for an individual with a disability to attend this meeting, please contact [Barbara.Lopez@uphs.upenn.edu](mailto:Barbara.Lopez@uphs.upenn.edu), no later than December 15, 2017.*

## NONDISCRIMINATION STATEMENT

*The University of Pennsylvania values diversity and seeks talented students, faculty and staff from diverse backgrounds. The University of Pennsylvania does not discriminate on the basis of race, color, sex, sexual orientation, gender identity, religion, creed, national or ethnic origin, citizenship status, age, disability, veteran status or any other legally protected class status in the administration of its admissions, financial aid, educational or athletic programs, or other University administered programs or in its employment practices. Questions or complaints regarding this policy should be directed to the Executive Director of the Office of Affirmative Action and Equal Opportunity Programs, Sansom Place East, 3600 Chestnut Street, Suite 228, Philadelphia, PA 19104-6106; (215) 898-6993 (Voice) or (215) 898-7803 (TDD).*





**Penn Medicine**  
**Abramson Cancer Center**

3600 Market Street  
Suite 210  
Philadelphia, PA 19104-2643

PRESORTED  
First Class Mail  
U.S. Postage  
**PAID**  
Permit No. 2563  
Phila, PA 19176

Penn Medicine's Abramson Cancer Center  
and the Leukemia & Lymphoma Society PRESENT

# 2018 UPDATE IN HEMATOLOGIC MALIGNANCIES

with Proceedings from International Medical Meetings

*A CME/CNE-Certified Conference*

**JANUARY 26, 2018 7:30 AM – 4:30 PM**



A Cancer Center Designated by the  
National Cancer Institute